

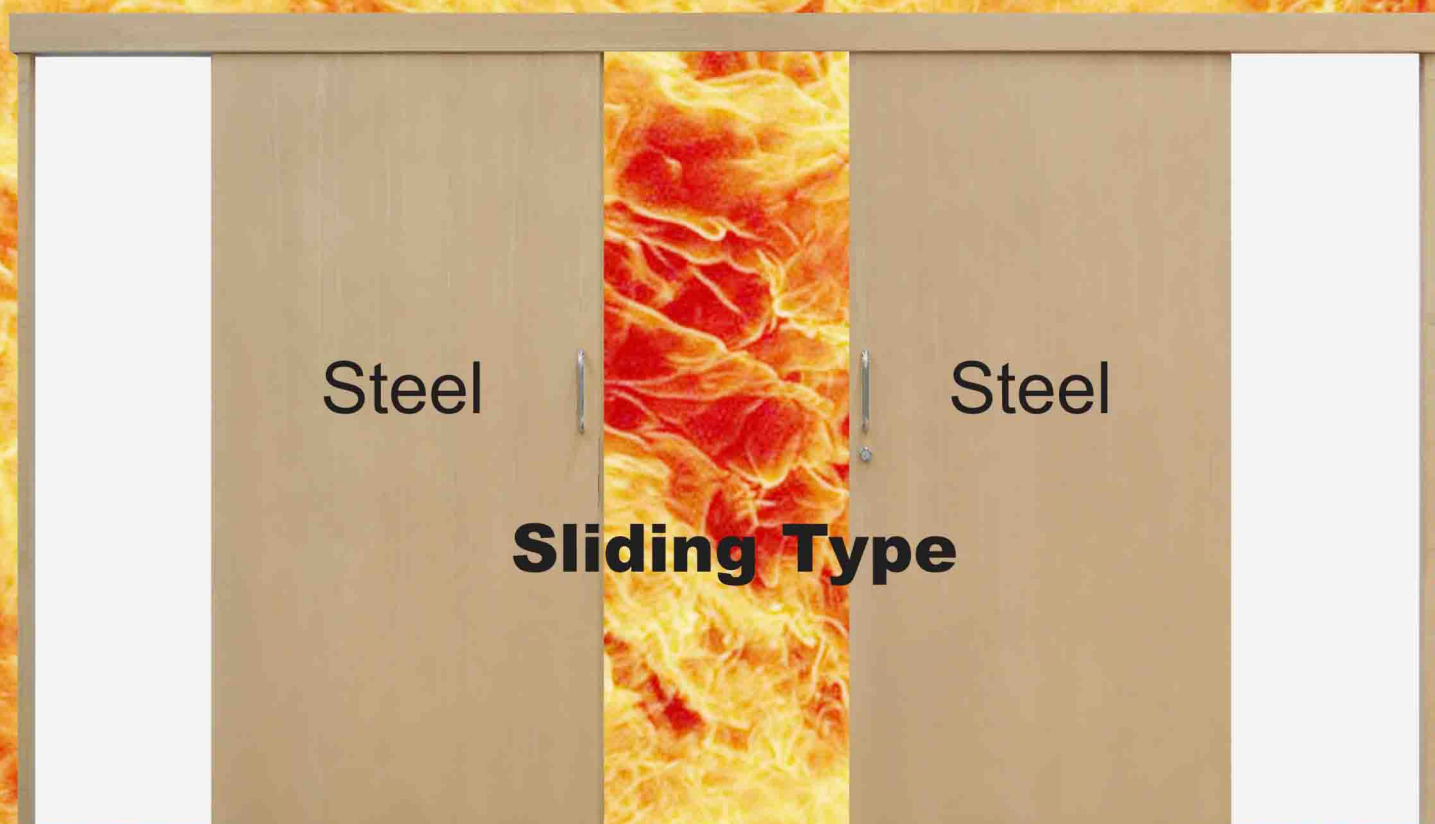
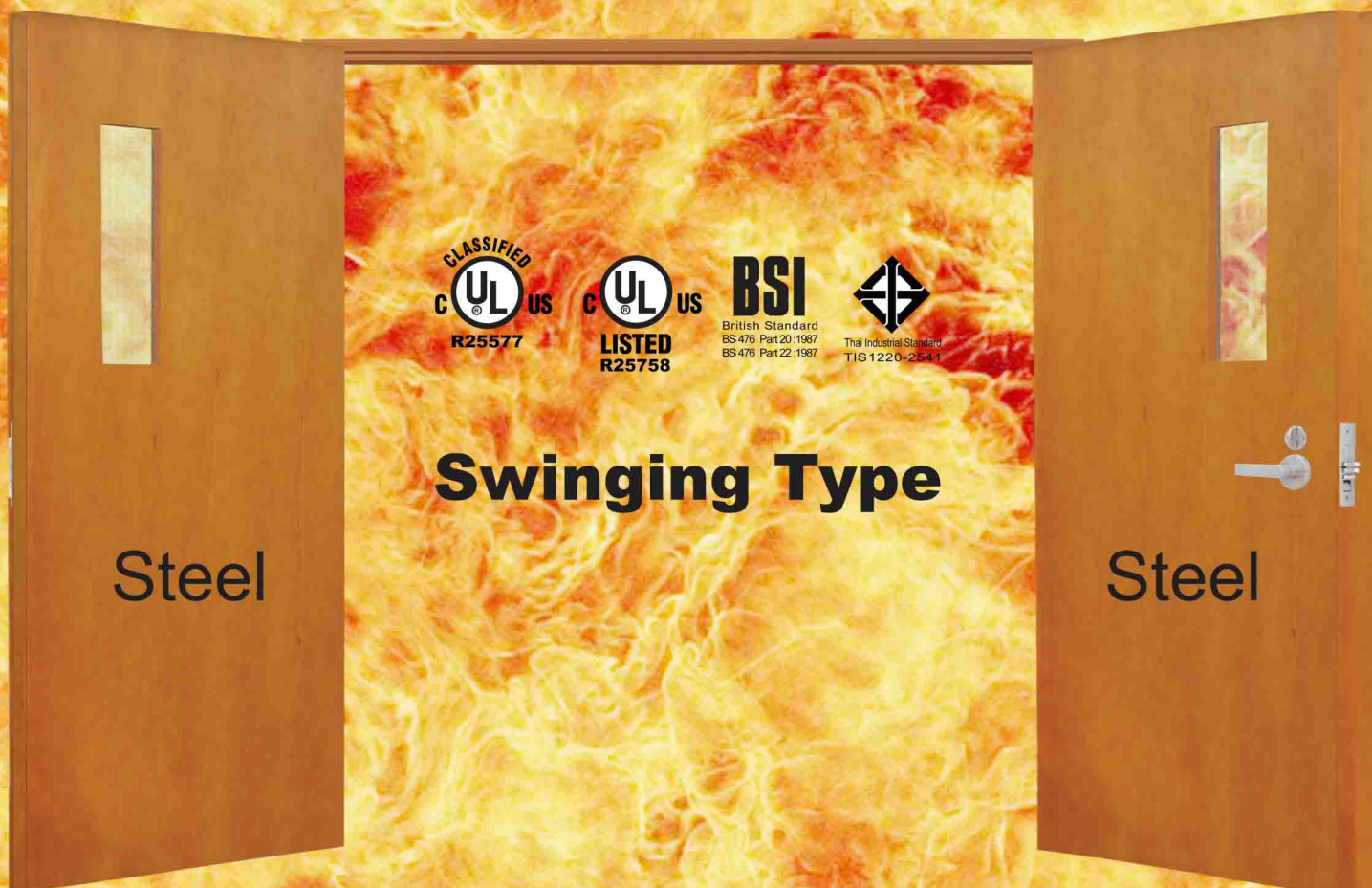


Classic Steel®



ISO 9001:2008 Certified
Certificate No. FM 509124

Steel Fire Doors / Steel Doors



Steel Fire Doors / Steel Doors

Swinging Type



Wired Glass or
Clear Fire Rated Glass
up to 3 hr with
intumescent sealant
around the glazing bead
available on request

Steel

Type : FRD, 3 Hr Fire Rated by



CLASSIFIED
UL US
R25577



LISTED
UL US
R25758



Thai Industrial Standard
TIS 1220-2541

Type : CSD, 2 Hr Fire Rated by



BSI
British Standard
BS 476 Part 20:1987
BS 476 Part 22:1987



Thai Industrial Standard
TIS 1288-2538

Type : SFD, 1 Hr Fire Rated by



BSI
British Standard
BS 476 Part 20:1987
BS 476 Part 22:1987



Thai Industrial Standard
TIS 1288-2538

Type : NFD, Steel Doors fabricated

in accordance with

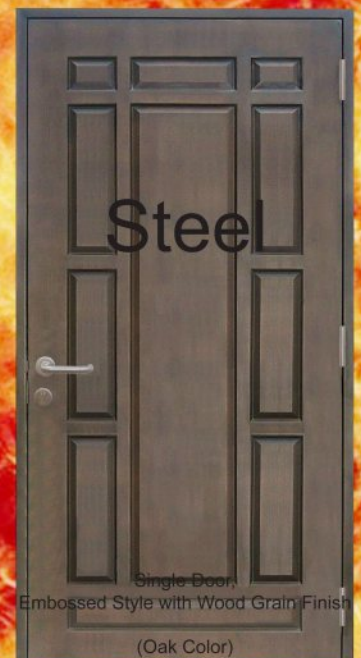
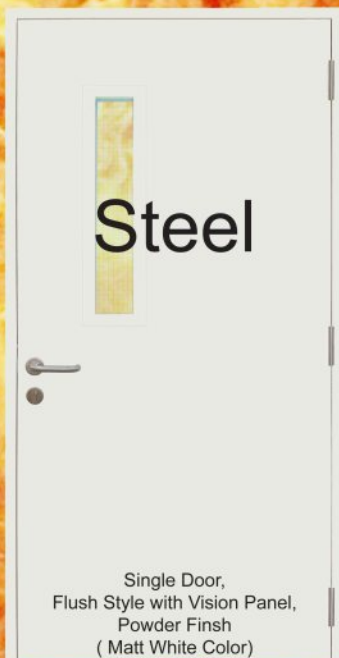


Thai Industrial Standard
TIS 1288-2538

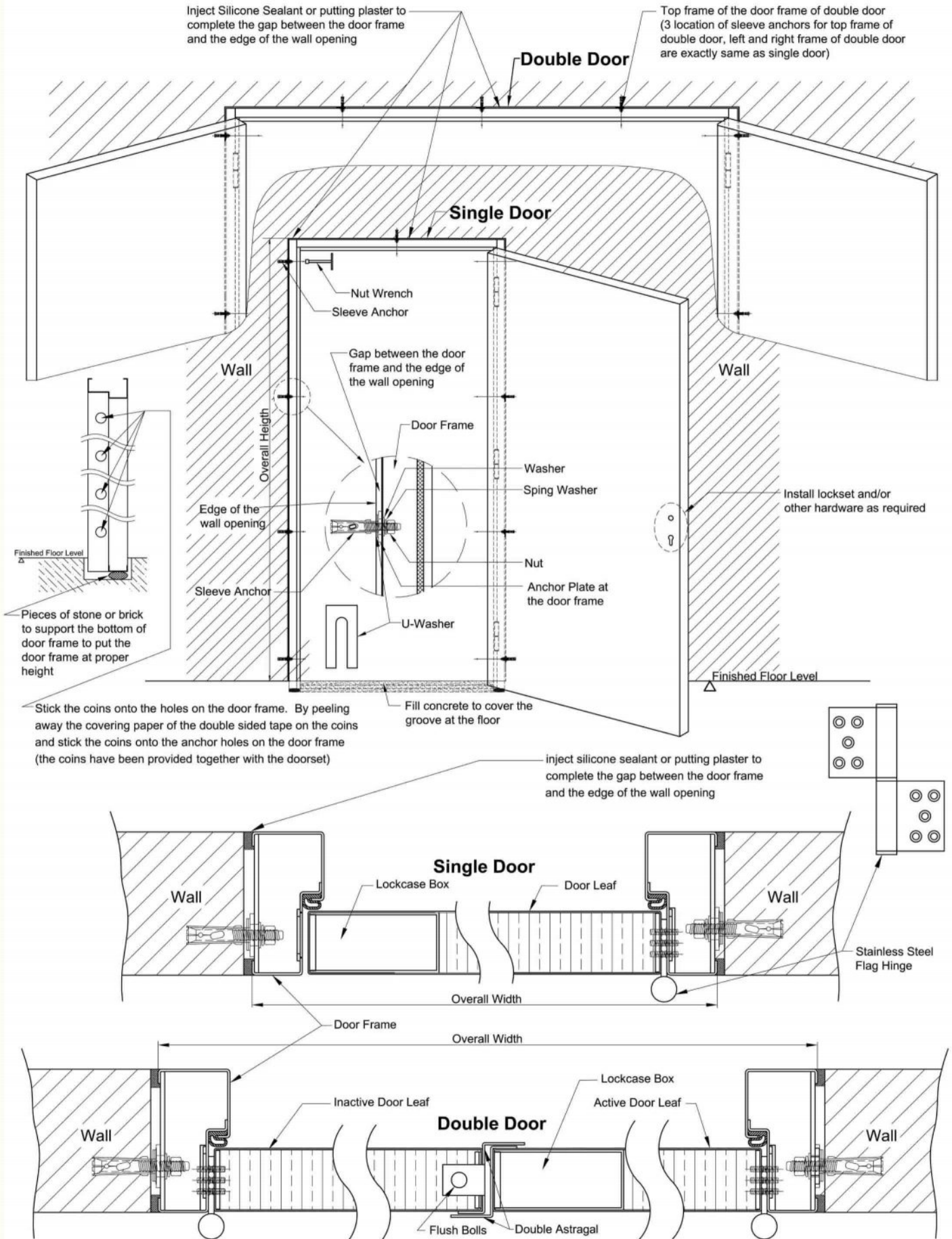


Steel

Double Door,
Flush Style with Vision Panel,
Powder Finish
(Matt White Color)



Installation Instruction for Swinging Door



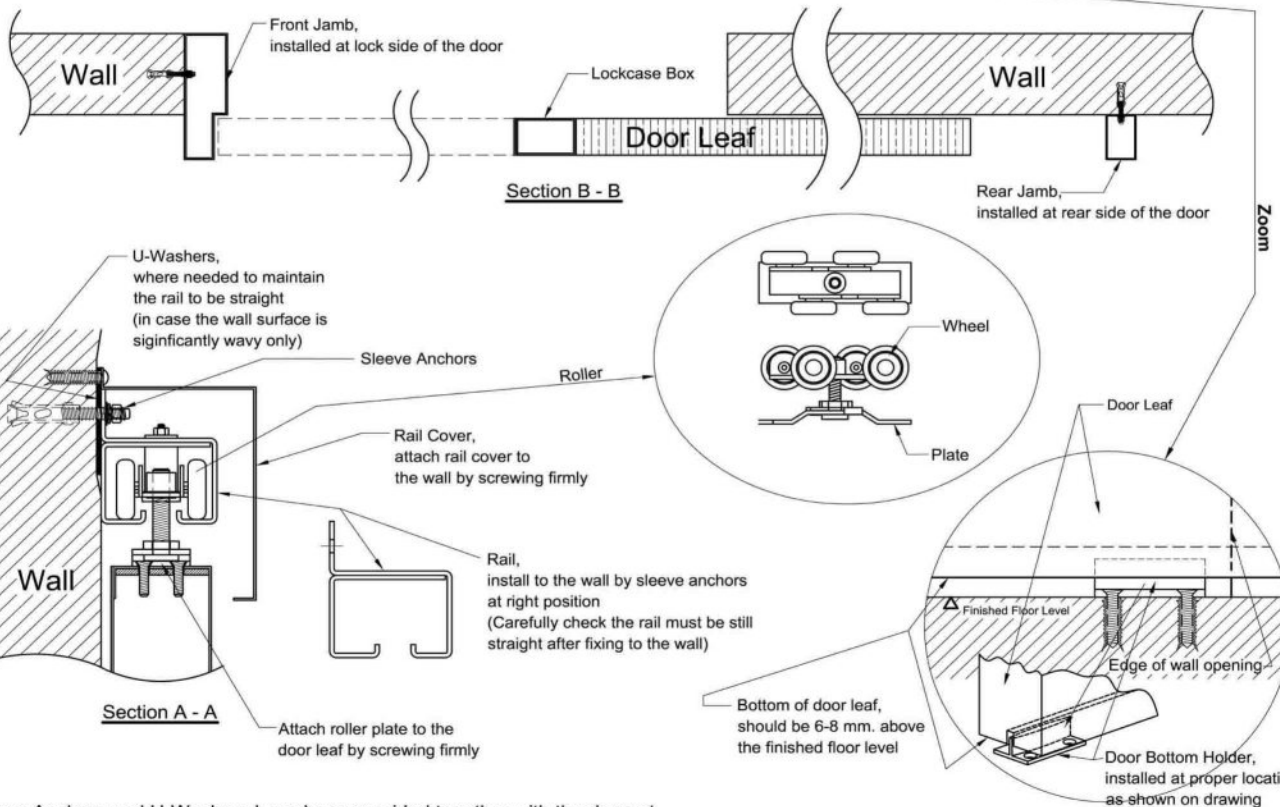
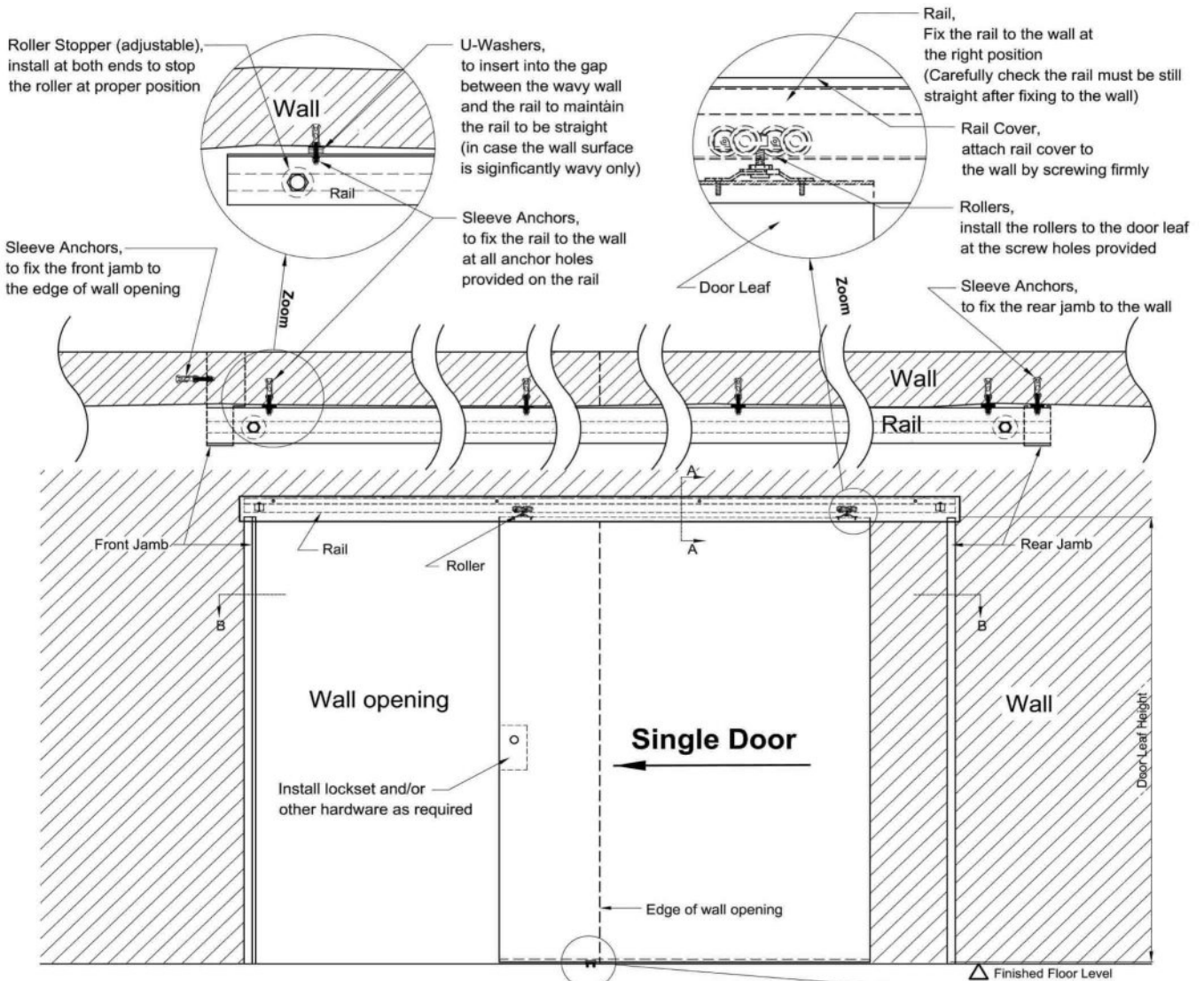
Coins, Sleeve Anchors and U-Washer have been provided together with the doorset

Steel Doors

Sliding Type



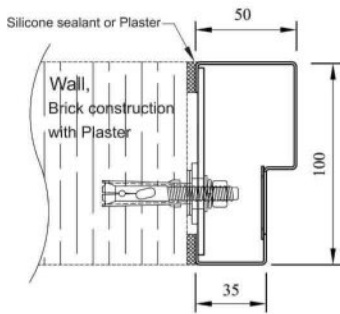
Installation Instruction for Sliding Door



Sleeve Anchors and U-Washers have been provided together with the doorset

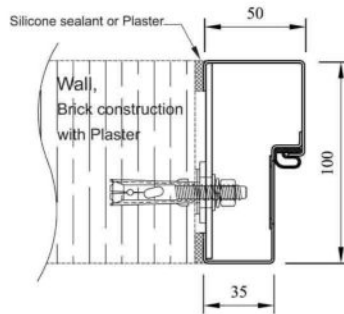
Steel Frames

**Standard Door Frame,
Single Rebate without rubber bumper**



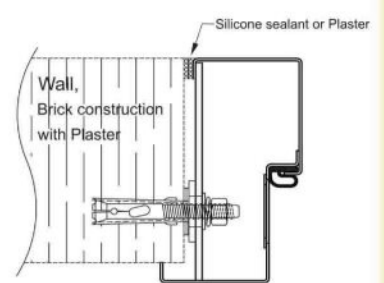
**Door Frame Size : 50 mm x 100 mm
(Standard Size)**

**Standard Door Frame,
Single Rebate with rubber bumper**



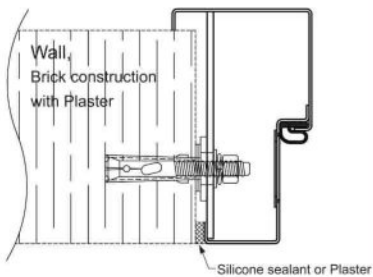
**Door Frame Size : 50 mm x 100 mm
(Standard Size)**

**Door Frame,
Single Rebate with architrave at pull side**



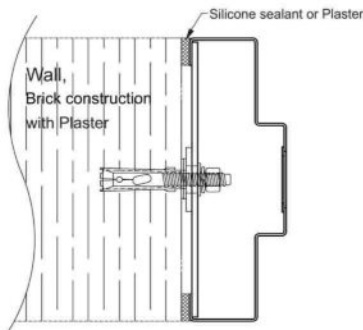
Door Frame Size : Made to order

**Door Frame,
Single Rebate with architrave at push side**



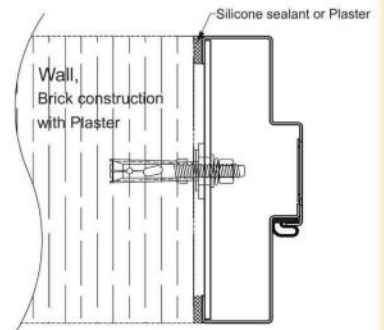
Door Frame Size : Made to order

**Door Frame,
Double Rebate without rubber bumper**



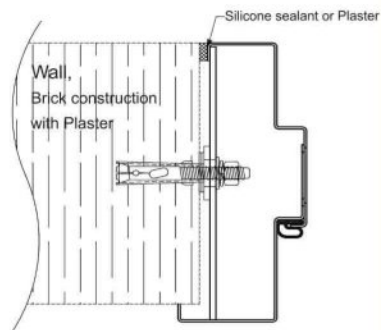
Door Frame Size : Made to order

**Door Frame,
Double Rebate with rubber bumper**



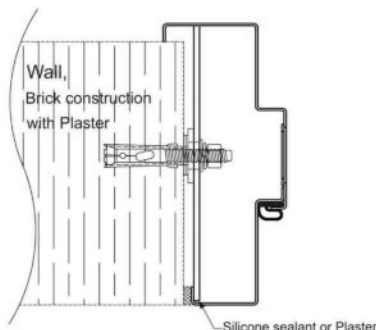
Door Frame Size : Made to order

**Door Frame,
Double Rebate with architrave at pull side**



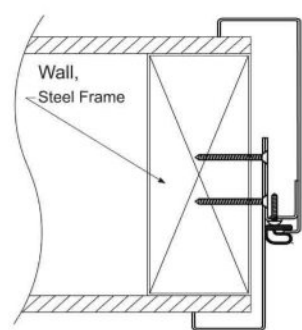
Door Frame Size : Made to order

**Door Frame,
Double Rebate with architrave at push side**



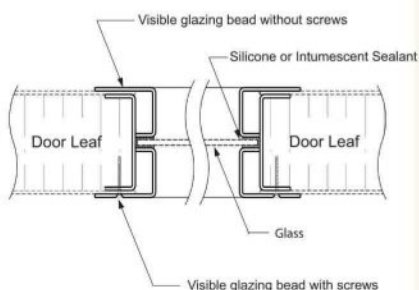
Door Frame Size : Made to order

**Door Frame,
Knock Down Type for Modular House**



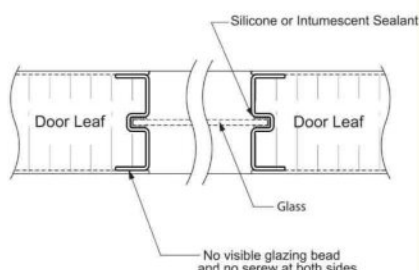
Door Frame Size : Made to order

**Vision Panel of door leaf
with visible glazing bead**



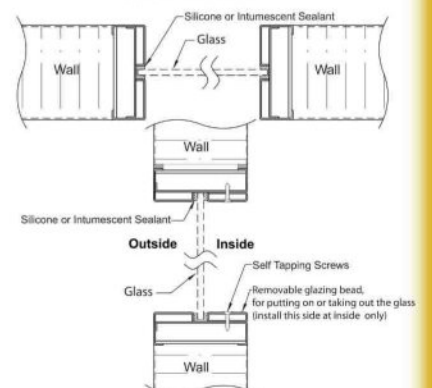
Door Frame Size : Made to order

**Vision Panel of door leaf
without visible glazing bead**



Door Frame Size : Made to order

Window Frame



Window Frame Size : Made to order

Door Hardware (OPTION)



Panic Exit Device, Rim Type, Aluminum Finish



Exit Lock,
Satin Stainless Steel Lever Handle



Swinging Fire Door Closer,
3 Hr Fire Rated, NHO,
Regular Arm, 180°,
60-85 Kgs, Silver Finish



Swinging Fire Door Closer,
3 Hr Fire Rated, NHO,
Regular Arm, 180°,
60-150 Kgs, Silver Finish
(Heavy Duty Type)



Panic Exit Device, Vertical Rod Type, Aluminum Finish



Security Mortise Lock for Swinging Door,
Single Cylinder with Knob with auxiliary
deadbolt to open from inside only,
Satin Stainless Steel Handle-SS304
(Heavy Duty Type)



Mortise Lock for Swinging Door,
Single Cylinder with Knob,
Satin Stainless Steel Handle-SS304



Mortise Lock for Sliding Door,
Single Cylinder with Knob
(Heavy Duty Type)



Mortise Lock for Sliding Door,
Single Cylinder with Knob



Nylon Wheel Set
for Sliding Door



Satin Stainless Steel Handle
with Plate-SS304



Polished Stainless Steel Handle
without Plate-SS304

How to Order

X-XXX-X-X

Door Type :-

Swinging Type :-

FRD = Steel Fire Door - 3 Hr Fire Rated
CSD = Steel Fire Door - 2 Hr Fire Rated
SFD = Steel Fire Door - 1 Hr Fire Rated
NFD = Steel Door

Sliding Type :-

SLD = Steel Sliding Door

Finish :-

P = Powder
W = Wood Grain
R = Primer Only

Door Number :-

S = Single Door
D = Double Door

Door Style :-

00 = Flush
OG = Flush with Ordinary Glass 6 mm thk
WG = Flush with Wired Glass 6 mm thk
FG = Flush with Fire Rated Glass
0L = Flush with Louver
OL = Flush with Ordinary Glass 6 mm thk and Louver
WL = Flush with Wired Glass 6 mm thk and Louver
05 = Embossed 5 Panels
11 = Embossed 11 Panels

Size :-

Swinging Type (Overall Size - mm)

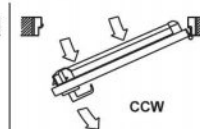
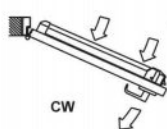
Width x Height = Overall Width (Outer Width of door frame) x Overall Height (Height from finished floor level to top of door frame)

Sliding Type (Door Leaf Size - mm)

Width x Height = Width of door leaf x Height of door leaf

Opening Direction (Top View) :-

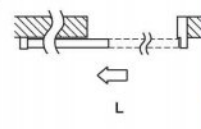
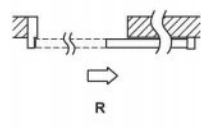
Swinging Type



CW = Door Leaf (active door leaf in case of double door) is opened to Clockwise direction

CCW = Door Leaf (active door leaf in case of double door) is opened to CounterClockwise direction

Sliding Type



R = Door Leaf (active door leaf in case of double door) is slid to open to Right side

L = Door Leaf (active door leaf in case of double door) is slid to open to Left side

Example : FRD-S11W-900x2200-CW

= Steel Fire Door, 3 Hr Fire Rated, Single Door, Embossed Style 11 Panels, Wood Grain Finish, Overall Width 900 mm x Overall Height 2200 mm, Door Leaf is opened to Clockwise direction.

CSD-D00P-1500x2100-CCW

= Steel Fire Door, 2 Hr Fire Rated, Double Door, Flush Style, Powder Finish, Overall Width 1500 mm x Overall Height 2100 mm, Active Door Leaf is opened to CounterClockwise direction.

SFD-SOGR-1000x2100-CCW

= Steel Fire Door, 1 Hr Fire Rated, Single Door, Flush Style, with Ordinary Glass 6 mm thk, Primer Only, Overall Width 1000 mm x Overall Height 2100 mm, Door Leaf is opened to CounterClockwise direction.

SLD-D00W-1500x2100-R

= Steel Sliding Door, Double Door, Flush Style, Wood Grain Finish, Width of Door Leaf 1500 mm (both doors) x Height of Door Leaf 2100 mm, Door Leaf is slid to open to Right side.



We, **PCJ INDUSTRIES CO., LTD.**, was established in 1998, specialize in production of Steel Fire Doors, Air Outlets, Duct Dampers, Duct Silencers and Cable Trunks. Most of our products have been certified by several organizations for standardization, i.e. :
UL (Underwriters Laboratories Inc.), **BSI** (British Standards Institution), **TISI** (Thai Industrial Standards Institute), **ACC** (Air Diffusion Council), **AS** (Standards Australia). Moreover, our company has been certified by **ISO 9001 : 2008** as well. We have our own factory established on our own land, area 40,000 sq.m.(approx.), in Kaengkhroi, Saraburi, Thailand.

Our Policy has always been, and will continue to be, the production and On Time-Every Time Schedule Delivery of Quality, Reliability and Competitively Priced Products. We have invested for instruments, machines and we have experience engineer teams take full time to research and develop our product lines continuously, including new product designs to meet worldwide market demands.

Our products have been distributed to many countries worldwide :-



and will be distributed to a lot more countries in the future.



PCJ INDUSTRIES CO., LTD.
พีซีเจ อุตสาหกรรม จำกัด.

199/24-25 Vibhavadeerangsit Road, Samsennai, Payathai, Bangkok 10400, Thailand
 Tel : +66 2 2701938, +66 2 2781604, +66 2 2790859, +66 2 2794166, +66 2 6160184, +66 2 6160185
 Fax : +66 2 6160071 Email : sales@pcjindustries.co.th Website : www.pcjindustries.co.th



ISO 9001 : 2008 Certified
 Certificate No. FM 509124

Printed in Thailand
 0 1 0 4 1 2